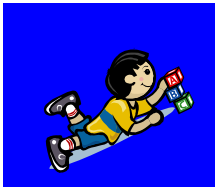


Choices for Children



Choices for Children Giving Fund

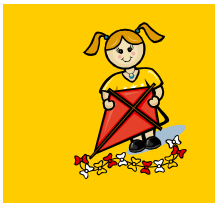


Choices for Children has proudly supported families with a variety of services in both Alpine and El Dorado County since 1976. Our programs include:

- ◆ Parent and Provider Education
- ◆ Child Care Food Program
- ◆ Child Care Subsidy
- ◆ Child Care Referrals
- ◆ Community Resource Events: Kids' Expo, Annual Provider Conferences, Concerts, Community Gift programs.



Please consider making a gift of \$25, \$50, \$100, \$500 or more. If you wish to specifically designate the funds to a particular Choices for Children program, please identify that program by circling the name of the program above. The money that you contribute to our Giving Fund goes to work right here in the community, helping parents and those caring for young children.



Please make your check payable to: **Choices for Children Giving Fund**. Remember, all gifts are tax deductible. Your gift will make an enormous difference to increase the quality of programs available for our community's children. Please, give generously!

With Appreciation,

The Choices for Children Staff

To mail your gift to the nearest Choices for Children Office:

Cameron Park
3161 Cameron Park Dr.
Suite 101
Cameron Park, CA 95682

South Lake Tahoe
1029 Takela Dr.,
#1
South Lake Tahoe, CA 96150

Alpine
100 Foothill Rd.
Suite D-6
Markleeville, CA 96120